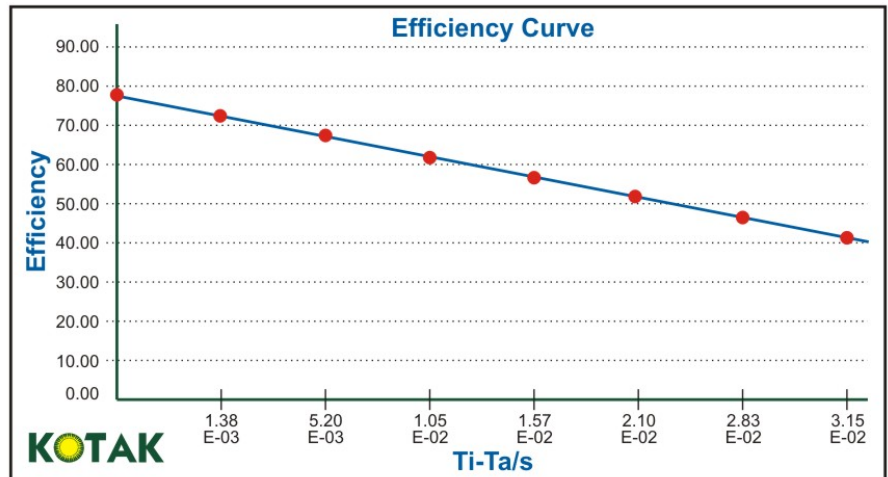


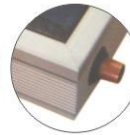
**KOTAKSUN - C**



Thread type



Various fittings



Standard connections



Packing

DESCRIPTION	SPECIFICATION
Type Identification	Flat plate, C-4 Way ( 2 Inlet & 2 Outlet), CS-3 Way ( 1 inlet & 2 outlet)
Standards	BIS/IS 12933 Part II, DIN EN 12975-1:2006, EN 12975-2:2006
External Dimension	2000(L) x 1000 (w) x 95 (H)
Packing Dimension	2010(L) x 1080(w)x100(H)
Riser tube	Copper
Quantity	9 Pcs
Header Size	25mm dia.
Spectrum Absorber coating	Black chrome, Absorptivity $\geq 0.94$ , emmissivity $\leq 0.12$
Insulation material	50 mm thk fiberglass
Frame	Aluminium alloy
Tempered glass	4mm textured glass
Back sheet	Aluminium back sheet
Weight	35 kg
Heat Transfer Fluid	Potable water
Fluid volume	1.9 L
Packing	Thermocole with Carton cover (for ends only)
40ft container/20ft container	287 pcs/137pcs
Certificate	